



★ COOPERATIVE BRAND ★



— BRIGHTER STREETS —

SMARTER LIGHTING

★ LONG JOIN ★

HOT SALE PRODUCT IN RUSSIA MARKET



上海朗骏智能科技股份有限公司
SHANGHAI LONG-JOIN INTELLIGENT TECHNOLOGY INC

地址：上海市宝山区沪太路4292号永乐汇文创意园A幢302室
电话：+86 159-0082-9072 / 138-1776-1880
邮箱：wally@ljsensor.com / neal@ljsensor.com
官网：www.longjoin.com

ADD : ROOM 302,A# BUILDING,NO.4292 HUTAI ROAD,
SHANGHAI 200444,CHINA
TEL : +86 159-0082-9072 / 138-1776-1880
EMAIL : wally@ljsensor.com / neal@ljsensor.com
WEB : www.longjoin.com





★ FACTORY SHOW



★ CERTIFICATE

In the end, the companies that survive are not necessarily the ones who minimize the price, but the ones who make the product better.

—James Dyson (Founder of Dyson)

Company Profile:

Shanghai Long-Join Electronic Technology Development Co., Ltd. was incorporated in September 2003 in BaoShan District, Shanghai. On February 14, 2016, the company implemented a stock reform and changed its name to Shanghai LongJoin Intelligent Technology Co., LTD. On May 30, 2016, it was listed on the "New Third Board" of the National SME share transfer System with the stock code 837588.

The registered capital of the company is 28 million yuan, with a total investment of about 100 million yuan (including 55 million yuan of fixed assets); The headquarters is located in Shanghai, the factory is located in HaiYan, Zhejiang Province, the factory covers an area of about 38,000 square meters.

Business Advantage:

- ★ Fully integrate upstream and downstream resources. leading in the market to provide complete application solutions.
- ★ Focus on providing independent single lamp control solutions for a complete product range of 20 items, leading in production to meet the needs of major users.
- ★ Rapid introduction of new technology applications, original intelligent single light telemetry control pioneer solution.
- ★ Focus on technology research and development and innovation, accumulating more than 30 invention and utility patents and registered designs.
- ★ Trademark registration covers major economies worldwide.
- ★ Over the past three years, the company has achieved a sales growth rate of 125.82%.





7 PIN NEMA Receptacle

More than 20 versions of NEMA Receptacles. Each versions with unique technology. Most of versions are patent laureate.



LONGJOIN Shorting Cap Reach IP66 Waterproof Level

The shorting cap provides a closed circuit when a photo control is not installed, keeping lights continually on for safety. These devices are UL listed, durable and weatherproof, fully suited for an outdoor environment 365 days of the year.



Zhaga Cover & Base

Zhaga Cover & Base as a set of developer accessories, which provide customers with sufficient choices of height and dimensions while designing in their EMS line.



Twist-Lock Photocell

Twist-Lock Photocell enjoys the fully new feature in apperance. Make itself be the smybol of core componets in the control system of street lighting.



NEMA Cover & Base

NEMA Cover & Base as a set of developer accessories, which provide customers with sufficient choices of height, dimensions and color while designing in their PCB compnents.



Wire-in Photocell

Direct Wire-in Therm Photocontrol holds the tiny and mini shape, which provide its with more plentiful and fruitful application scenes.

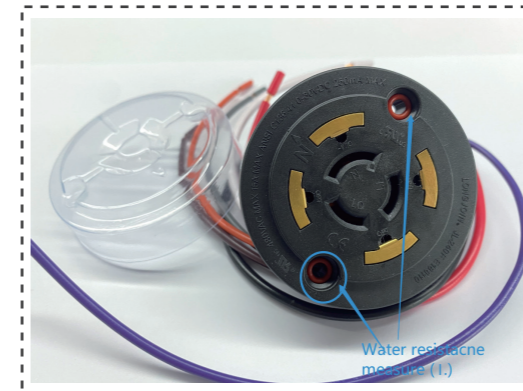


IP68 WATERPROOF MEASURES



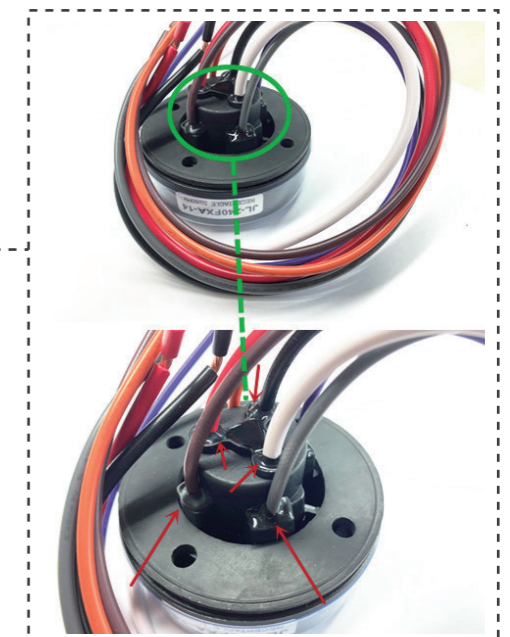
Benefits

Through internal and external triple waterproof measures, it can effectively prevent water vapor from entering the interior of customers' luminaries during temperature fluctuations caused by thermal expansion and contraction through the pin positions in the socket. This helps prolong the service life of the lights.



I.External Measures

Subtle water resistance measures around the screws holes.



II.External Measures

Compared to the standard product in this market, the JL-240F series incorporates better waterproof measures by applying glue to all seven lines outlet holes.



III.Internal Measures

Inside the JL-240F, waterproof glue is applied to the three metal pins to enhance the waterproof function of the socket.

PRODUCTS SHOW



- ★ **IP68 WATERPROOF LEVEL**
- JL-240F**
- 7PIN/5PIN NEMA DIMMING RECEPTACLE

- ★ **REACH IP68 WATERPROOF LEVEL**
- ★ **HANDLE DESIGN FOR EASY INSTALLATION**
- JL-208-IP66**
- SHORTING CAP



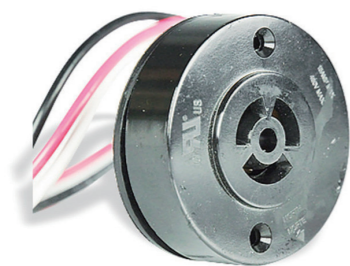
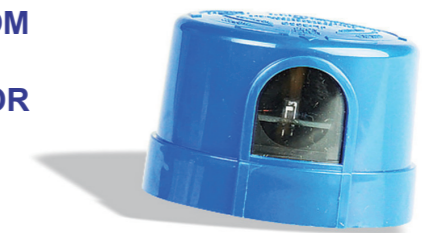
- ★ **360 DEGREE ROTATION WITHOUT TOOLS VERSION**
- ★ **ULTRA-THIN VERSION TAKES UP NO SPACE INSIDE THE LUMINAIRE**
- JL-260D**
- 7PIN/5PIN NEMA DIMMING RECEPTACLE

- ★ **BOTTOM SEALED, WATERPROOF LEVEL UP TO IP68**
- ★ **4-WIRE WELDING CONSTRUCTION, STRONGER AND LESS PRONE TO BREAKAGE**
- JL-700**
- ZHAGA BOOK 18 RECEPTACLE



- ★ **EXTERNAL INSTALLATION VERSION**
- ★ **IP68 CABLE WATERPROOF LEVEL**
- JL-260C**
- 7PIN/5PIN NEMA DIMMING RECEPTACLE

- ★ **COVERS ALL COMMON VOLTAGES FROM 110V TO 480V**
- ★ **CUSTOMISED PARAMETERS, SUITABLE FOR TENDER PROJECTS**
- JL-207**
- 3PIN UL LISTED PHOTOCELL



- ★ **IP68 WATERPROOF LEVEL**
- ★ **360 DEGREE ROTATING VERSION**
- JL-230F**
- 3PIN NEMA DIMMING RECEPTACLE

- ★ **7PIN RUBBER SEALED HOLE DESIGN, IP68 WATERPROOF**
- ★ **VENT HOLE DESIGN TO REDUCE PRESSURE INSIDE THE CONTROLLER AND REDUCE THE RISK OF WATER INGRESS**
- JL-242JV**
- NEMA & ZHAGA BASE & COVER

